



KIPP:NEWARK
THRIVE ACADEMY

KIPP:NEWARK
PUBLIC SCHOOLS
www.kippnj.org

P 973.273.7272
W www.kippnj.org/schools/kipp-thrive-academy
A 229 18th Avenue, Newark, NJ 07108

OPENED 2012
LEADER Ashley M. Salter
HOURS 7:45AM-3:30PM (M, Tu, Th, F)
7:45AM-12:30PM (W)



Our network's second elementary school prepares scholars for college and career from the first day of kindergarten.

ABOUT KIPP THRIVE ACADEMY

KIPP THRIVE Academy was founded as our second Newark elementary school. It moved back to the Central Ward in 2015 to its permanent campus, the 18th Avenue building. Our campus gives THRIVERS access to two gyms, a playground, and beautiful classrooms that inspire students to succeed academically.

ABOUT KIPP NEWARK

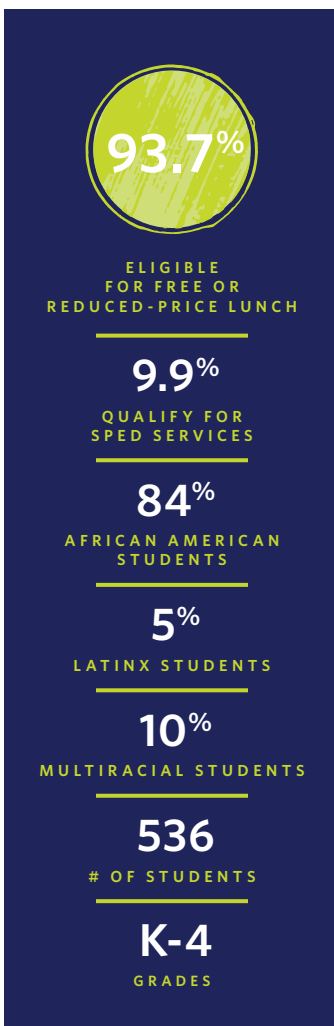
KIPP Newark schools are part of the nationally recognized "Knowledge Is Power Program" non-profit network of college preparatory, public charter schools educating elementary, middle, and high school students. In 2002, 80 fifth graders walked

through the doors of our first middle school in Newark, New Jersey. KIPP Newark has since grown to teach 6,321 students in grades K-12 across 12 schools in Newark. Ninety of KIPP Newark students currently qualify for free or reduced meals.

KIPP Newark alumni earn college degrees at more than three times the national average compared to their peers. By offering highly effective educators with strong bonds to families, more time in school learning, services that support a variety of student needs, and a culture focused on achievement, our students are on the path to and through college, career, and beyond.

"By supporting KIPP and what they're doing, we'll ultimately support what we're aiming to have which is a better community."

— KIPP THRIVE ACADEMY PARENT



WHAT MAKES KIPP THRIVE ACADEMY UNIQUE?

ARTS EDUCATION

Exposing students to the arts can have a big impact on their development, confidence, concentration and teamwork. Our students take performing arts, dance, and music classes twice a week to help them become creative, well-rounded individuals.

AN OLD BUILDING, REIMAGINED

KIPP THRIVE Academy finally moved to its forever home, at the historic 18th Avenue building. The school building was recently renovated to be a state-of-

the-art educational campus. Students have two gyms they share, a playground and beautiful, spacious classrooms.

SCIENCE AND TECHNOLOGY FROM KINDERGARTEN

Starting in Kindergarten, THRIVE students have access to technology, including a 1:2 computer to student ratio that ensures students learn 21st century skills. They also learn science and inquiry skills and explore the world around them through hands-on projects.



HOW ARE STUDENTS PROGRESSING?

PROGRESS REPORTING

Students are tested throughout the year to make sure they are learning, so we don't just rely on state tests to know if they are on-track. To track student reading proficiency and growth, we use iReady ELA and mCLASS DIBELS assessments. Teachers have custom-built dashboards to make this data actionable on a daily and weekly basis. We collect data points on each of our students and families are frequently updated on student progress.

OUR CURRICULUM

Our elementary schools implement curriculum literacy programs that support reading engagement and growth. In grades K-2, we offer the highly-ranked Magnetic Reading Foundations. Students in grades 3-4 are offered a program called Phonics for Reading to build foundational skills. Our math curriculum utilizes the Illustrative Math program, which empowers students to build on what they know about math to infer solutions to problems and represent their thinking in multiple ways.

VALUES



THINK +
INQUIRE



HONOR YOURSELF
+ OTHERS



REACH FOR
EXCELLENCE



IMAGINE +
INNOVATE



VOICE YOUR
TRUTH



ENGAGE WITH
THE WORLD

MEET ASHLEY M. SALTER, SCHOOL LEADER

Ashley M. Salter was born and raised in East Orange, New Jersey and brings to KIPP THRIVE Academy over fourteen years of experience as an educator and leader. Ashley joined KIPP THRIVE Academy in 2018 as a teacher and later became a second grade instructional coach and assistant principal of math for grades 2-4. In May 2016, she obtained her master's in educational leadership graduated from the College of St. Elizabeth. She has also completed post-graduate work at Montclair State University (Alternate Route Program) and Harvard University (Data Wise Leadership Institute). Ashley is a member of Zeta Phi Beta Sorority, Inc., Kappa Delta Phi Honor Society, and Kappa Gamma Pi Honor Society.